

Trelleborg Antivibration Solutions make improvements people can feel physically. From smoother travel to a quieter, more efficient machine we make life feel better. With quality, testing and compliance built in, our customers can have the confidence they're dealing with a true partner that understands their challenges and will ensure their people and passengers have never felt better.

We're always looking for a new challenge so why not get in touch?
Or visit us at [trelleborg.com/en/anti-vibration-solutions](https://www.trelleborg.com/en/anti-vibration-solutions)

FLEXX[®] Curve **Less is More**

**FLEXX[®] CURVE, THE LATEST COLLABORATION BETWEEN
TRELLEBORG AND BOMBARDIER, HAS ARRIVED.**

FLEXX[®] Curve

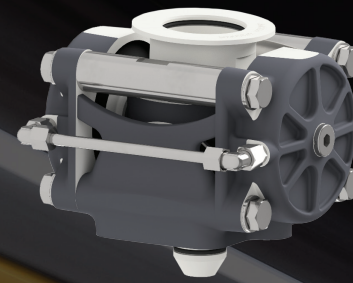
Designed to enhance commuter comfort, it helps create a faster, gentler, quieter, safer on-board experience. Already uniquely proven to provide cushioned stability around rail bends, FLEXX[®] Curve can be fitted (or retro-fitted) to multiple bogies.

By increasing longitudinal deflection capacity and reducing yaw stiffness of the axle, it changes the angle of attack with the track. That means less noise, less damage, less energy consumption, and less maintenance required.

As global leaders in antivibration solutions with over 100 years' experience in the rail sector, our superior materials and technology deliver tangible results.

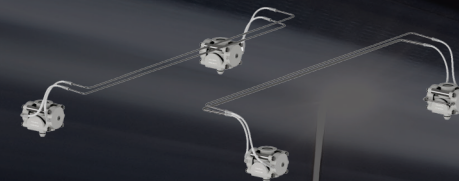
JOURNEYS HAVE NEVER FELT BETTER.

Global antivibration specialist, Trelleborg's antivibration solutions operation, has in collaboration with Bombardier, the multinational aerospace and transportation company, developed an innovative hydraulic axle guide element which enables Bombardier trains to better adapt to their immediate environment, delivering greater performance and efficiency.



Standard

- Plug-and-play solution to replace conventional rubber to metal axle guide
- Superior curving performance by using the HALL principle
- Longitudinal stiffness range 3-5kN/mm



Cross coupled

- Connected FLEXX[®] Curve units from left to right bogie side
- Excellent curving performance by using enhanced HALL principle
- Longitudinal stiffness 2kN/mm

Cross coupled – PRS

- Valve – connected FLEXX[®] Curve units from left to right bogie side
- Outstanding curving performance by using valve-controlled fluid flow
- Longitudinal stiffness <2kN/mm